

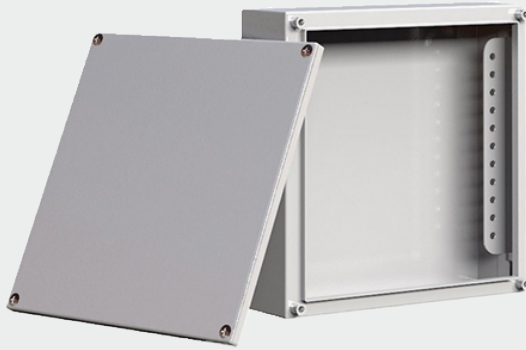
JARD  
ENGINEERS



JARD Engineers Pvt. Ltd.

**Industrial Enclosures**

# Industrial Enclosures (Series S)



## Technical Data

JARDEPL provide enclosures ranging from fully welded construction with IP-55-IP-68

- Wall-mounted construction with compression lock.
- Wall-mounted enclosure with clamping arrangement.
- Wall mounting enclosure with swinging arrangement.
- Door In Door enclosure.
- Enclosure suitable for Pedestal and HMI mounting.

### SPECIFICATION COMPLIANCE:

Complies to the standard IS/ IEC 60529:2001 (RA2019)(Empty enclosure, Control Instrument)IP protection from IP 42 to IP 68.

### DESIGN SPECIFICATION AND CONSTRUCTION:

- Fully welded body, Removable door with earthing stud.
- Internal mounting bracket provided for mounting rail the mounting Plate.
- Mounting bracket standard removable or Welded.
- Main body in 1.2/1.5 thick, Doors in 1.2/1.5/2 mm thick. Mounting bracket 2.00 mm thick, 135° door opening with SS 304 Hinge

### FEATURES:

Enclosure fitted as a standard with 304, 306L lock, hinges, bolted Cover, Finish Matt N 4, Internal 2 B Finish. Finish for CRCA, Powder coated 60-70 microns thick, textured or smooth finish, RAL standard 7035 shed.

### MATERIAL:

MOC MS/CRCA, SS 304L /SS 316L

### GASKET:

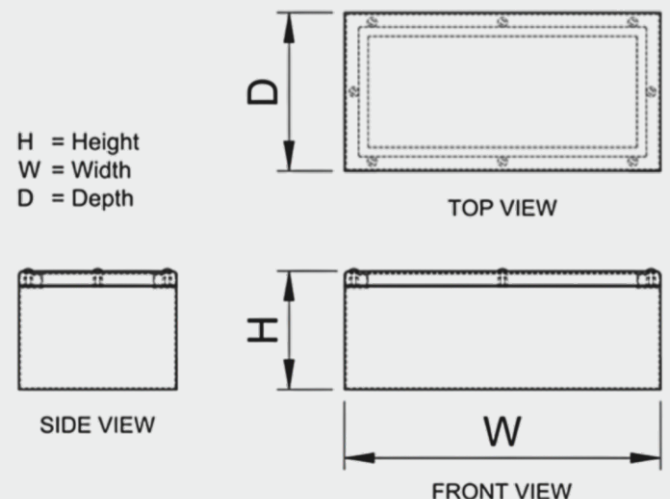
- Gasket for door sealing formed - in - place foam gasket (FIPFG) / Neoprene.
- Operating temperature of -40 to +60 degrees C

### CABLE ENTRY:

Gland holes are provided at the Bottom/ Gland plate as requested by the customer.

### PACKING:

Packing with Bubble wrap, and Plastic wrap, corrugated/wooden packing provided on customer demand.

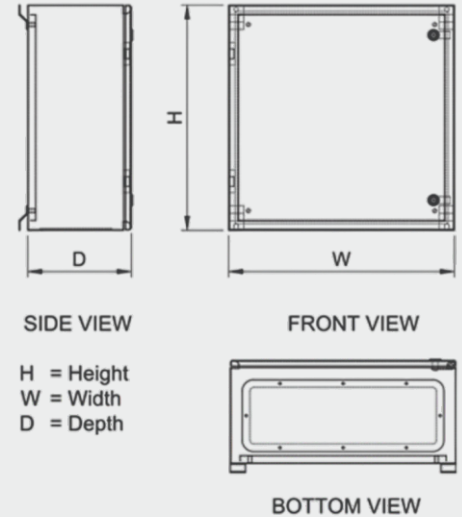
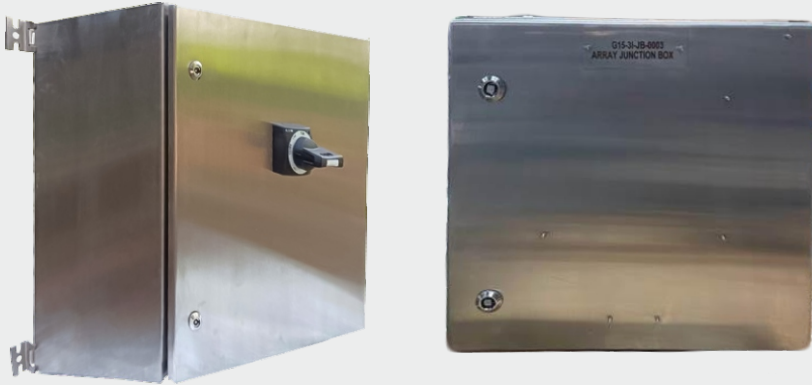


# Industrial Enclosures (Series S)

Automation Industry

ASSEMBLY TYPE	MODEL NO.	EXT. DIM. MM		
		Height	Width	Depth
WALL MOUNTED, SCREW MOUNTED, JB, BD, INTERNAL MTG BRACKET	JARDEPL 151510	150	150	100
	JARDEPL 202010	200	200	100
	JARDEPL 252510	250	250	100
	JARDEPL 252515	250	250	150
WALL MOUNTED/SCREW MOUNTED, BD/SPL,HL, MOUNTING PLATE ARRANGEMENT, SWING ARRANGEMENT( OPTIONAL) BODY 1.2/1.5 MM THICK, DOOR 1.5/ 2MM THICK,	JARDEPL 303015	300	300	150
	JARDEPL 303025	300	300	250
	JARDEPL 303021	300	300	210
	JARDEPL 303815	300	380	155
	JARDEPL 353515	350	350	150
	JARDEPL 383821	380	380	210
	JARDEPL 302015	300	200	155
	JARDEPL 403021	400	300	210
	JARDEPL 405015	400	500	150
	JARDEPL 404021	400	400	210
	JARDEPL 454525	450	450	250
	JARDEPL 406030	400	600	300
	JARDEPL 504015	500	400	150
	JARDEPL 505021	500	500	210
	JARDEPL 505025	500	500	250
	JARDEPL 505030	500	500	300
	JARDEPL 604015	600	400	150
	JARDEPL 604015	600	400	300
	JARDEPL 605020	600	500	200
	JARDEPL 606030	600	600	300
	JARDEPL 606040	600	600	400

# Industrial Enclosures (Series M)



## Technical Data

JARDEPL provide enclosures ranging from fully welded construction with IP-55, IP 65

- Wall-mounted construction with compression lock.
- Wall mounted enclosure with clamping arrangement.
- Wall mounting enclosure with swinging arrangement.
- Door-in-Door enclosure.
- Enclosure suitable for Pedestal and HMI mounting.

### SPECIFICATION COMPLIANCE:

Complies to the standard IS/ IEC 60529:2001 (RA2019)(Empty enclosure, Control Instrument)IP protection from IP 42 to IP 65.

### DESIGN SPECIFICATION AND CONSTRUCTION:

- Fully welded body, Removable door with earthing stud.
- Internal bush for mounting Plate.
- Mounting bracket standard, removable or welded.
- Main body in 1.5/2 mm thick, Doors in 1.5/2 mm thick.
- Mounting bracket 3.00 mm thick, 135° door opening with SS 304 Hinge

### FEATURES:

Enclosure fitted as a standard with 304, 306L lock, hinges, bolted Cover, Finish Matt N 4, Internal 2 B Finish. Finish for CRCA, Powder coated 60-70 microns thick, textured or smooth finish, RAL standard 7035 shed.

### MATERIAL:

MOC MS/CRCA, SS 304L /SS 316L

### GASKET:

Gasket for door sealing formed - in - place foam gasket (FIPFG) / Neoprene. operating temperature of -40 to +60 degrees C

### CABLE ENTRY:

Gland holes are provided at the Bottom/ Gland plate as requested by the customer

### PACKING:

Packing with Bubble wrap, and Plastic wrap, corrugated/wooden packing provided on customer demand.

### LOCK:

Single point, Quarter-turn Compression locks,

### GLAND PLATES:

Removal from inside / outside, available in 2mm, 3mm thick. steel material.

### MOUNTING PLATES:

Standard 2 mm galvanised sheet, mounted on bush. Side mounting plate on customer demand.

### EARTHING:

M6 / M8 earthing stud on body and door provided with washer and nut as standard.

# Industrial Enclosures (Series M)

ASSEMBLY TYPE	MODEL NO.	EXT. DIM. MM		
		Height	Width	Depth
WALL MOUNTED/SPL,HL, MOUNTING PLATE ARRANGEMENT.bBODY 1.5 /2 MM THICK, DOOR 2 MM THICK.	JARDEPL 608030	600	800	300
	JARDEPL 705025	700	500	250
	JARDEPL 705030	700	500	300
	JARDEPL 767621	760	760	210
	JARDEPL 767631	760	760	310
	JARDEPL 808025	800	800	250
	JARDEPL 808030	800	800	300
	JARDEPL 808040	800	800	400
	JARDEPL 806030	800	600	300
	JARDEPL 909030	900	900	300
	JARDEPL 909040	900	900	400
	JARDEPL 908030	900	800	300
	JARDEPL 905025	900	500	250
1 BAY, 2 BAY,FLOOR STANDING/WALL MOUNTED, SPL/TPL, HL.	JARDEPL 106030	1000	600	300
	JARDEPL 108035	1000	800	350
	JARDEPL 101030	1000	1000	300
	JARDEPL 108040	1000	800	400

# Industrial Enclosures (Series L)



## Technical Data

Outer Stainless steel enclosures are ideal for outdoor application. JRDE outdoor enclosures have a wide range for floor standing, Frame Mounting, Single Door, Double door, Multi door, fully welded, and removable Covers.

JRDE enclosure designs are suited for Efficient, Flexible, installation with an IP rating which will keep electronic equipment safe and continue to run reliably.

### SPECIFICATION COMPLIANCE:

Complies to standard IS/IEC 60529:2001(RA2019)  
(Empty Enclosure, Control Instrument)

### CERTIFICATION COMPLIANCE:

KLPL/BTC/22/05-07 (IP-55, IP-65) TUV/PTL/22-23/SFTY-WT/0018 (IP-55, IP-65)

### DESIGN SPECIFICATION:

Removable front and back door, fully welded structure of panels, Top removable or fixed welded by ensuring Ingress Protection is maintained, all accessories are removable in design..

### MATERIAL:

Body, Doors, Structure 1.6mm, 2mm, 2.5mm, 3 mm in 316,316L, 304,304L material standard, Finish 2B/N4 Matt,

### STANDARD FEATURES:

Enclosures fitted as standard with 304,316,316L locks, hinges, door stopper, drain breather, drawing pocket, light bracket and limit switch bracket, Earthing studs, and hardware.

### EARTHING PROVISION:

LHS side, copper earth stud available from inside and outside the Enclosure.

### CONSTRUCTION

Fully welded, rigid and robust frame.

### DOORS:

Fitted with hinged LHS or RHS openings. Removable type with Screw and Bush fitting.

### LOCK:

Single-point CAM lock with Key, 3-point Swing handle with Key, Push button handle with Key.

### CABLE ENTRY ARRANGEMENT:

Removable Gland plate from inside or outside of the enclosure in 2-6mm thickness in SS Material standard.

### LIFTING ARRANGEMENT:

Removable I-Bolt M-12 size with 200 kg each load carrying capacity fitted with a bush arrangement

### PLINTH/STAND

Removable Plinth of size 100mm-300mm with grounding provision, fully welded stand with square tube as per 100mm-400mm as per application.

### FINISH

Inside 2-B, Outside N-4 (Matt)

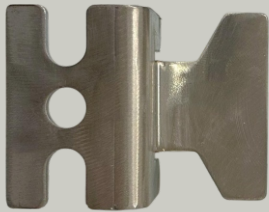
# Industrial Enclosures (Series L)

CONSTRUCTION	MODEL NO.	EXT. DIM. MM		
		Height	Width	Depth
1 BAY, 2 BAY,FLOOR STANDING/WALL MOUNTED, SPL/TPL, HL.	JARDEPL 106030	1000	600	300
	JARDEPL 108035	1000	800	350
	JARDEPL 101030	1000	1000	300
FLOOR STANDING,1 BAY,2 BAY,SPL/TPL	JARDEPL 126030	1200	1000	300
	JARDEPL 128035	1200	1000	350
	JARDEPL 121040	1200	1000	400
	JARDEPL 141035	1400	1000	350
	JARDEPL 141240	1400	1000	400
	JARDEPL 158040	1500	1000	400
	JARDEPL 161450	1600	1000	500
	JARDEPL 181240	1800	1000	400
	JARDEPL 198040	1900	1000	400
	JARDEPL 191050	1900	1000	500
FLOOR STANDING,1 BAY, 2 BAY,SPL/TPL	JARDEPL 206040	2000	1000	400
	JARDEPL 208045	2000	1000	450
	JARDEPL 208060	2000	1000	600
	JARDEPL 201040	2000	1000	400
	JARDEPL 201060	2000	1000	600
	JARDEPL 201080	2000	1000	800
	JARDEPL 201240	2000	1000	400
	JARDEPL 201280	2000	1000	800
FLOOR STANDING, 1 BAY,2 BAY,3 BAY,4 BAY, SPL/TPL	JARDEPL 201440	2000	1000	400
	JARDEPL 201460	2000	1000	600
	JARDEPL 201660	2000	1000	600
	JARDEPL 201680	2000	1000	800
	JARDEPL 201860	2000	1000	600
	JARDEPL 201880	2000	1000	800

# Accessories



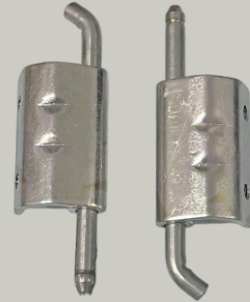
JARD Engineers Pvt. Ltd.



Wall Mounting Bracket



PU Gasket



Hinges



Single Point Lock



Door Stopper



Eye Bolt

Gland Plate

Drawing Pocket

3 Point Lock

## CONTACT:

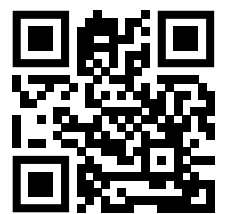
M. INAYATH KHAN  
A3S SOLUTIONS LIMITED

Email: [inayath.khan@a3ssolution.com](mailto:inayath.khan@a3ssolution.com) Tel: 00966504989405

✉ [marketing@jrdengineers.com](mailto:marketing@jrdengineers.com)

📍 MFG Contact: JARD Engineers, Pune Maharashtra India 411021

☎ 020-67242124, +91-8421250710 🌐 [www.jrdengineers.com](http://www.jrdengineers.com)



Scan to Know More